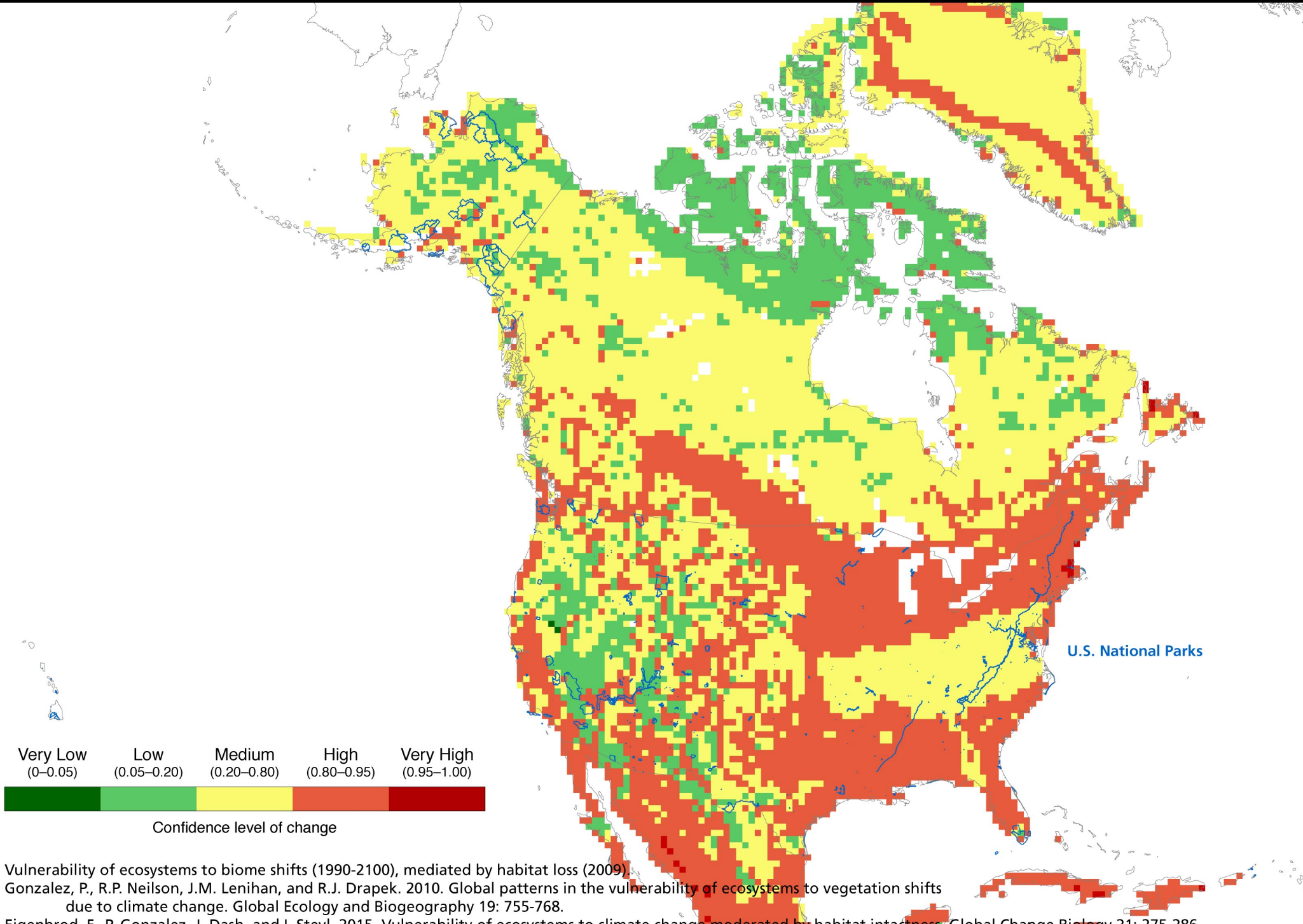


# Vulnerability to Climate Change and Habitat Loss



Very Low (0-0.05)    Low (0.05-0.20)    Medium (0.20-0.80)    High (0.80-0.95)    Very High (0.95-1.00)

Confidence level of change

Vulnerability of ecosystems to biome shifts (1990-2100), mediated by habitat loss (2009).

Gonzalez, P., R.P. Neilson, J.M. Lenihan, and R.J. Drapek. 2010. Global patterns in the vulnerability of ecosystems to vegetation shifts due to climate change. *Global Ecology and Biogeography* 19: 755-768.

Eigenbrod, F., P. Gonzalez, J. Dash, and I. Steyl. 2015. Vulnerability of ecosystems to climate change moderated by habitat intactness. *Global Change Biology* 21: 275-286.